

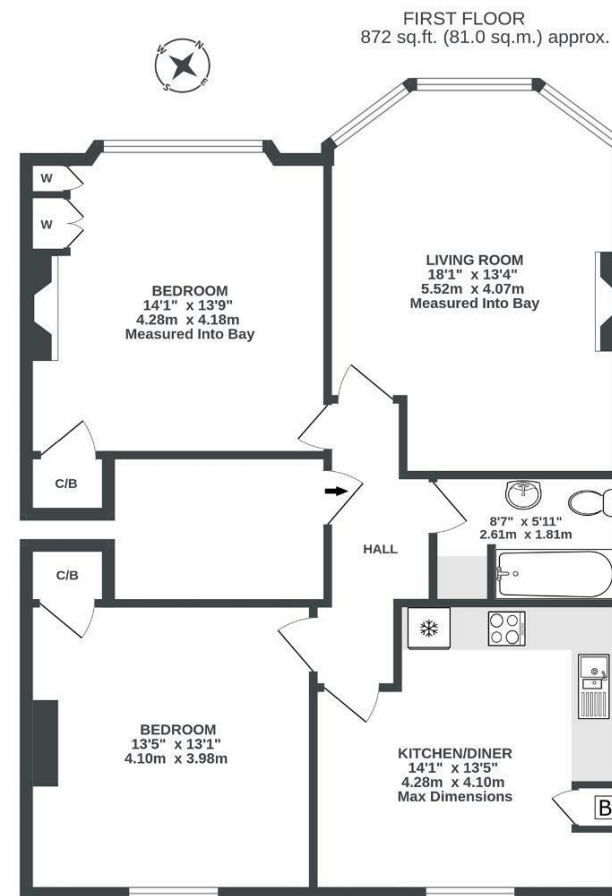
Boardwalk

Chesterfield

ST. ANDREWS, BRISTOL

Chesterfield Road ST ANDREWS

APPROXIMATE FLOOR AREA
81 SQM / 872 SQFT



Illustrations are for reference purposes only, measurements are approximate, not to scale.

Boardwalk

Chesterfield

ST. ANDREWS, BRISTOL

£

£400,000



BS6 5DS

zzz

2 Bedrooms



1 Bathrooms

I have loved my first 'own home' in St Andrews. It is so accessible, with a gorgeous park right on it's door step and easy reach of many cafes and restaurants on Gloucester Road or Montpelier. It's proximity to the M32 and a designated parking space meant that commuting to work has always been easy.

